



SPEEDGAIN™ 5e Patch Panels

Category 5e Component Compliant
 ETL Verified Performance
 Rugged Construction
 Easy, Inline Paired Termination
 Universal Wiring

PERFORMANCE SPECIFICATIONS

Component Performance

- ◆ Exceed ANSI/TIA/EIA-568-B.2 Category 5e component standards
- ◆ ETL verified component compliant
- ◆ Interoperable and Backward compatible to lower performing cabling systems

Channel Performance

- ◆ Optimally balanced ETL Independently verified solution
- ◆ Provides Increased usable bandwidth
- ◆ Guaranteed positive Power-Sum ACR to 190MHz
- ◆ Worst Case return Loss of 14dB headroom over Category 5e component requirements
- ◆ Backed by Hubbell's MISSION CRITICAL® 25-year Warranty with approved cables

PRODUCT SPECIFICATIONS

Panel Metal

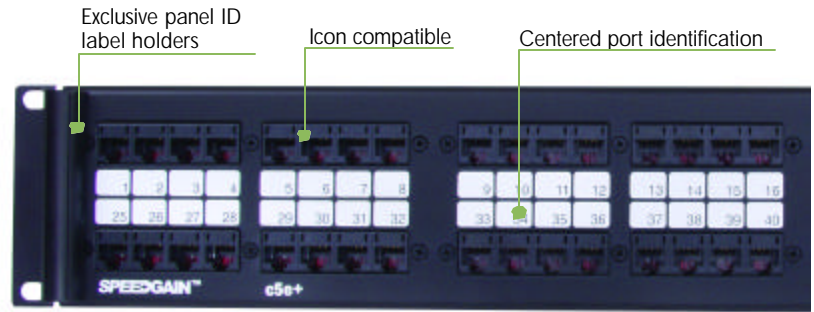
- ◆ .090 Thick Aluminum
- ◆ Durable black powder coat finish
- ◆ Rolled edge construction
- ◆ Dimensions and mounting holes per EIA-310-D

IDC

- ◆ Towers: Flame retardant UL 94 V-0
- ◆ Contacts: high performance copper with tin-lead plating
- ◆ Terminates 22-26 AWG solid conductors
- ◆ Compatible with all industry 110 impact tools
- ◆ Fully enclosed protected PCB circuitry

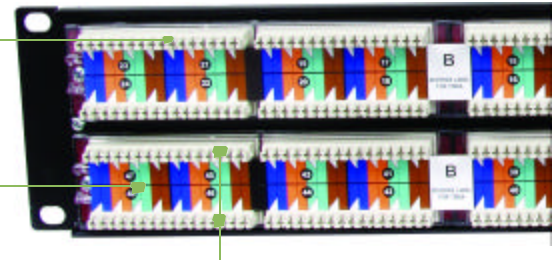
Jack Adapter Module

- ◆ Housing - Flame retardant UL 94 V-0
- ◆ Contacts - High performance copper alloy with precious metal plating
- ◆ Rated for 750 plug insertions



Inline paired punch down sequence

Universal wiring



Wide IDC spacing increases room for lacing and termination

SPEEDGAIN 5e series patch panels offer the most rugged, feature rich, and high performance Category 5e panels in the industry. SPEEDGAIN panels significantly exceed ANSI/TIA/EIA-568-B.2 Category 5e requirements with component and channel performance to 190MHz.

SPEEDGAIN panels utilize a rugged rolled edge construction to provide superior panel rigidity and a clear plastic shroud to protect PCB from contaminants and errant terminations. A full series of pre-printed identification products are available as well as Hubbell Labeling Software and laser printable sheets for generating custom port labels.

AGENCY LISTINGS

- ◆ ANSI/TIA/EIA-568-B.2 Category 5e component compliant
- ◆ UL and cUL
- ◆ CENELEC EN 50713 and ISO/IEC 11801 compliant
- ◆ Conforms to FCC 47 Part 68.5



APPLICATIONS SUPPORTED

- ◆ Gigabit Ethernet 1000BASE-TX
- ◆ 10/100/1000 BASE-T
- ◆ IEEE 802.3ab (< 1 *10⁻¹⁰) Gigabit Ethernet Verified
- ◆ IEEE 802.3af DTE Power compliant
- ◆ 155/622 Mbps ATM
- ◆ Analog voice and digital voice (VoIP)
- ◆ Analog (broadband, baseband) and digital video
- ◆ 100 Mbps TP-PMD
- ◆ 4/16 Mbps Token Ring

ORDERING INFORMATION

SPEEDGAIN™ Category 5e Patch Panels

SPEEDGAIN Category 5e panels are offered in port counts from 16- to 96-ports in T568B and Universal Wiring schemes. Universal panels are supplied with labeling for T568B wiring, but can be easily be converted to T568A with a simple flip of the universal wiring label. Optionally, universal panels are offered with a cable management bar (PCBLMGT) to eliminate cable bend radius control concerns and provide cable strain relief.



Delivery: 1 Category 5e patch panel Universal wiring labels
 Clear plastic label holders Mounting hardware

Ports	Height	Width	Rack Units	Universal Wiring	T568B Wiring	Universal Wiring w/ManagementBar	Carton Dimensions H x W x D
16	1.75" (45)	19"	1	P5E16UE	P5E16B19E	-	21.0" x 4.5" x 2.5"
24	1.75" (45)	19"	1	P5E24UE	P5E24B19E	P5E24U	21.0" x 4.5" x 2.5"
48	3.50" (89)	19"	2	P5E48UE	P5E48B19E	P5E48U	21.0" x 4.5" x 2.5"
96	7.00" (178)	19"	4	P5E96UE	P5E96B19E	-	21.0" x 8.5" x 2.5"

ACCESSORIES

Rear Cable Management Bars

Description	Catalog No.
Clips to rear of panels	PCBLMGT
Screws to rear flange of 19" rack	MCCSWB19

Horizontal Duct Panels

19" x 1.75" w/ front cover	HC219CE3N
19" x 1.75" w/ front cover	HC219CE3N

Icon Buttons

Blank Icon Buttons (Pack of 100)	IX100
Data Icon Buttons (Pack of 100)	IX100C
Voice Icon Buttons (Pack of 100)	IX100T

Related SPEEDGAIN 5e Channel Solution Products

Description	Catalog No.
Xcelerator™ Category 5e jacks	HXJ5E*
Category 5e 110 field termination kit (100-pair)	110BLK100FTK4
Category 5e patch cords	PC5E*

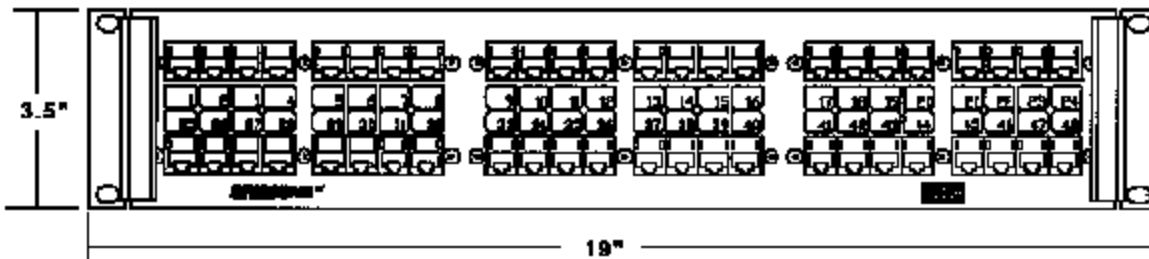
* Refer to catalog for complete ordering information

Hubbell Labeling Solutions

Use with Hubbell Labeling Software available on-line at www.hubbell-premise.com

Description	Catalog No.
Patch Panel Labels, 8-Port, Laser Printable (Pack of 10)	
Adhesive	XPLPPA10W
Paper (use w/clear plastic label holders supplied with panel)	XPLPP10W*
Patch Panel ID Labels, Laser Printable (Pack of 10)	
Paper (use with vertical ID label holders on panel)	XPLPPID10W
Extra Paper Label Holders	
8-port clear plastic paper holders (Pack of 50)	XPHP50
1U panel ID label holders (Pack of 10)	XPHPID1U10
2U panel ID label holders (Pack of 10)	XPHPID2U10

DIMENSIONS



Hubbell Premise Wiring
 HUBBELL INCORPORATED (Delaware)

14 Lord's Hill Road • Stonington, CT 06378-0901 • (860) 535-8326 • 800-626-0005
 Fax: (860) 535-8328 • Internet site: <http://www.hubbell-premise.com>

Worldwide Locations

Hubbell Premise Wiring, Asia Pacific
 Hubbell Canada Inc.
 Hubbell Premise Wiring, China
 Hubbell Premise Wiring, Europe
 Hubbell Int'l. Inc., Korea Branch
 Hubbell Premise Wiring, Latin America

852-2836-7131 Fax: 852-2836-7132
 905-839-1138 Fax: 905-839-9108
 86-21-63090119 Fax: 86-21-63090122
 44-(0)1234-848550 Fax: 44-(0)1234-856190
 82-2-(0)2607-1363 Fax: 82-2-(0)2603-7386
 305-251-4236 Fax: 305-251-4087

Hubbell de Mexico, S.A. de C.V.
 Hubbell Premise Wiring, Middle East
 Hubbell Premise Wiring, Puerto Rico
 Hubbell-Taian Co., Ltd., Taiwan
 Hubbell Incorporated, Turkey
 Hubbell Premise Wiring, Venezuela

52-5-559-5304
 971-4-393-4192
 787-720-7185
 886-2-(0)2515-0855
 90-216-414-8147
 58-16-6807453

Fax: 52-5-559-5885
 Fax: 971-4-393-4194
 Fax: 787-789-2796
 Fax: 886-2-(0)2515-0899
 Fax: 90-216-414-8148
 Fax: 58-281-2820323