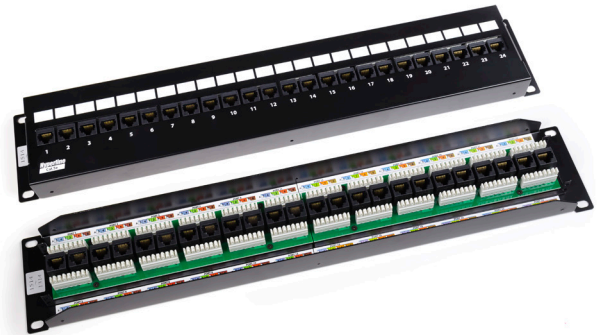


PPW-12-8P8C-C5E-FR

Patch Panel, CAT5E 12 Port RJ45

Meets ANSI/TIA/EIA-568-B.2 Category 5e requirements. It also meets TIA/EIA TSB-40, ISO/IEC Generic Cabling Standard 11801, and CENELEC Generic Cabling Standard EN50173.



Features & Specifications

MATERIALS

Front Plate: Fireproof ABS UL-94V0

IDC: Phosphor Bronze and Fireproof UL-94V0 PCT(PC+PBT)

PCB: FR-4 / UL-94V0 / 1.6mm

Contacts: Phosphor bronze with gold plating on contact area

89D Bracket: ABS Plastic

ELECTRICAL CHARACTERISTICS

According to UL 1863

Insulation Resistance: 500 mega ohms (min)

Contact Resistance: 20 mega ohms

Current Rating: 1.5 Amps (max)

DC Resistance: 0.1 ohms (max)

Dielectric Withstand Voltage: 1000 Volts AC RMS, 60Hz/1 minute