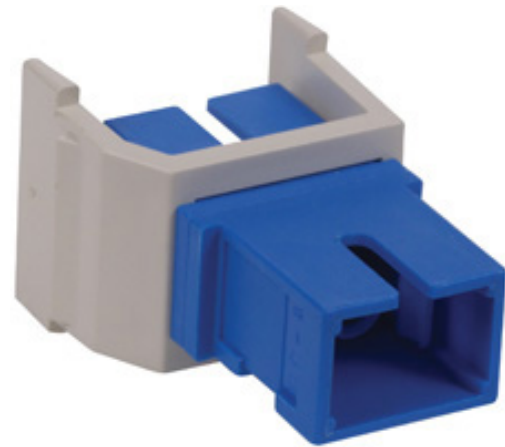


SFSCSW

OPTICHANNEL™ Keystone Adapter, SC Simplex SM/MM, Zirconia

Keystone adapters are factory-loaded with either ST-style, SC simplex, MT-RJ or LC adapters. Keystone adapters are used when fiber connections are needed at the work area. The MT-RJ and LC and SC keystone adapters are offered in a flush and non-flush mount version.



Features & Specifications

- Housing material: flame-retardant Polymer.
- Stainless Steel mounting clips.
- Meets the requirements of TIA/EIA-568-C.3.
- MM/SM mated pair insertion loss: < 0.50dB (0.25dB typical).
- Operating/storage temp: 0°C to 60°C.
- Adapter snap-in force: 15 ± 5 lb.
- Mating durability: 500 matings per FOTP-21.
- Available with Phosphor Bronze or Zirconia Ceramic sleeves in SC, ST-style and LC adapters.
- Mounts into iSTATION™ plates, surface housings and unloaded panels.